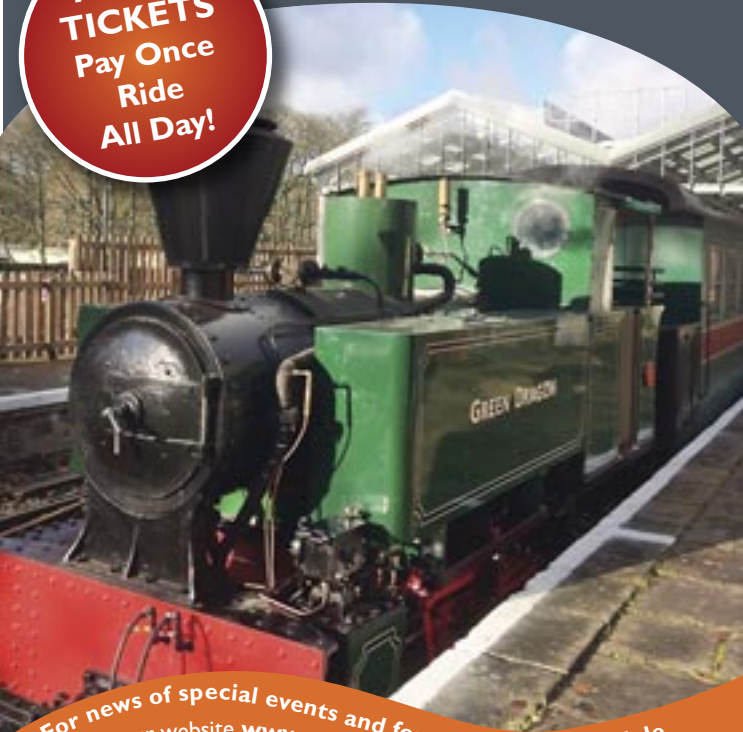


SOUTH TYNEDALE RAILWAY

the friendly railway

**ROVER
TICKETS**
Pay Once
Ride
All Day!



For news of special events and for our current schedule
visit our website www.south-tynedale-railway.org.uk
email enquiries@south-tynedale-railway.org.uk
or ring 01434 338214

2020

INFORMATION & TIMETABLE

TRIP ADVISOR CERTIFICATE OF EXCELLENCE CONTINUALLY SINCE 2014

S.T.R.
AN AWARD WINNING ATTRACTION!

How to find us ...



By Car:

Alston Station is just to the north of the town centre on the A686.
Postcode: CA9 3JB.

Slaggyford Station is just off the A689. Postcode CA8 7NH.

Car parks are free but donations are welcome!

By Bus:

Public bus services vary seasonally and include Newcastle, Hexham, Carlisle, Haltwhistle, Keswick and Stanhope. Visit [traveline](http://traveline.info) (www.traveline.info) or Go North East (www.simplygo.com) for info.

By Train:

The nearest National Rail stations are Haltwhistle, Langwathby & Penrith.

Accessibility:

Facilities at Alston and Slaggyford stations are accessible. A carriage for wheelchair users operates on every train and carers ride free of charge. The Crossing Cafe caters for gluten free, vegan and vegetarian diets.

www.south-tynedale-railway.org.uk

South Tynedale Railway, Alston, Cumbria, CA9 3JB

t: 01434 338212 e: enquiries@south-tynedale-railway.org.uk



Facebook @southtynerailway



#southtynedalerailway



Twitter @strps_rail



TripAdvisor: South Tynedale Railway

Welcome to *the friendly railway*



Climb aboard at any of our four stations for a leisurely ride through the scenic South Tyne Valley in the North Pennines.

You'll see stunning views of wide open skies and wildlife aplenty in this Area of Outstanding Natural Beauty and meet our volunteer train crew who will happily tell you more about the railway and the area.

Trains run from Easter to October with special events throughout the year and at only 30 minutes away from the Lake District World Heritage Site we aren't as remote as you might think!



Specials at STR

Our Special Event Days for 2020 are as follows (marked red on the calendar) - we add events into our calendar throughout the season so be sure to check our website for full details.

Eggstraspecial Easter Weekend:

11, 12 & 13th April

Come and meet the Easter Bunny and follow our Easter trail.

Halloween Horror:

Saturday 31st October

Our Spooky Special departs Alston at 4.30p.m

Santa Specials:

Our ever popular Santa Specials will run on

12th, 13th, 19th, 20th, 21st & 22nd December

Twixtmas Specials:

Sunday 27th December

Are you all Christmassed out? Tired of turkey? Sick of sprouts? What you need is a ride on a Twixtmas Special followed by pie, chips and peas in the Crossing Café

Afternoon teas:

Why not combine your train ride with a delicious afternoon tea? Visit our website to find out more.

Railway Experiences:

Ever wanted to drive a train, operate signals or stoke a fire aboard a steam train?

Well now you can!

Full details on our website

www.south-tynedale-railway.org.uk

We operate with a range of steam, diesel and battery electric locomotives and it is not always possible to state which loco will be in service in advance. If you are hoping to travel behind a specific loco please phone us in advance of your visit.

2020 Train Times ►

ALSTON DEPART	10:30	13:00	15:00	SLAGGYFORD DEPART	11:30	14:00	16:00
KIRKHAUGH	10:45	13:15	15:15	LINTLEY	11:40	14:10	16:10
LINTLEY	10:53	13:23	15:23	KIRKHAUGH	11:48	14:18	16:18
SLAGGYFORD ARRIVE	11:05	13:35	15:35	ALSTON ARRIVE	12:05	14:35	16:35

Kirkhaugh & Lintley are 'request' stops; Please hold out your hands to request the approaching train to stop. When joining the train, passengers must indicate to the Guard if they intend to alight at a request stop. Please check our website for details of special events as the timetable may differ from that printed.

Dates ▼

Fares ►

Rover:

ride all day except some special events.

Adult Rover all stations £11

Child Rover all stations £5.50

Family Rover* all stations £27.50

*2 adults and a maximum of three children

(age 1-15).

Children under 1 travel free

Dogs all stations £2

Cycles (where space allows in guard's van) £1

Single:

Adult £8.80

Child £4.40

Station Hopper:

Between 2 consecutive stations

Adult £3.30

Child £1.65

Between 3 consecutive stations

Adult £6.60

Child £3.30

All tickets are donation tickets to allow us to claim Gift Aid. Please say if you would prefer an alternative ticket.

March

Mo	Tu	We	Th	Fr	Sa	Su
					28	29
	31					

April

Mo	Tu	We	Th	Fr	Sa	Su
			2		4	5
6	7	8	9	10	11	12
13	14	15	16	17	18	19
	21		23		25	26
	28		30			

May

Mo	Tu	We	Th	Fr	Sa	Su
					2	3
	5		7	8	9	10
	12		14		16	17
	19		21		23	24
25	26	27	28	29	30	31

June

Mo	Tu	We	Th	Fr	Sa	Su
	2	3	4		6	7
	9	10	11		13	14
	16	17	18		20	21
	23	24	25		27	28
	30					

July

Mo	Tu	We	Th	Fr	Sa	Su
		1	2		4	5
	7	8	9		11	12
	14	15	16		18	19
20	21	22	23	24	25	26
27	28	29	30	31		

August

Mo	Tu	We	Th	Fr	Sa	Su
					1	2
3	4	5	6	7	8	9
10	11	12	13	14	15	16
17	18	19	20	21	22	23
24	25	26	27	28	29	30

September

Mo	Tu	We	Th	Fr	Sa	Su
	1	2	3		5	6
	8	9	10		12	13
	15	16	17		19	20
	22	23	24		26	27
	29	30				

October

Mo	Tu	We	Th	Fr	Sa	Su
			1		3	4
	6		8		10	11
	13		15		17	18
	20		22		24	25
26	27	28	29	30	31	

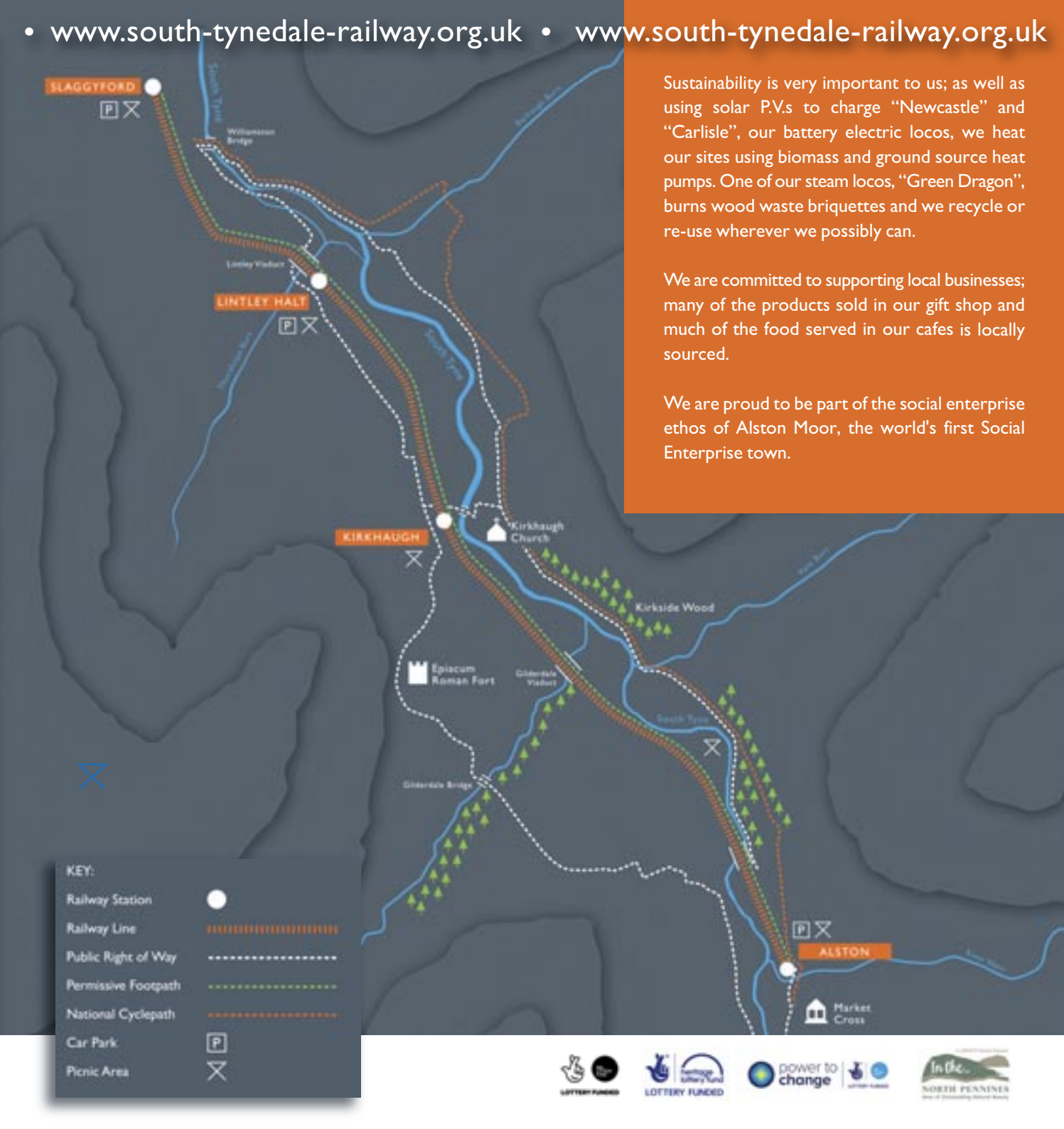
November

Mo	Tu	We	Th	Fr	Sa	Su
						1
					12	13
					19	20
21	22					27

December

Mo	Tu	We	Th	Fr	Sa	Su
					12	13
					19	20
21	22					27

31 We have a range of events through the year, highlighted in red - see left and on our website for further details.



Sustainability is very important to us; as well as using solar P.V.s to charge “Newcastle” and “Carlisle”, our battery electric locos, we heat our sites using biomass and ground source heat pumps. One of our steam locos, “Green Dragon”, burns wood waste briquettes and we recycle or re-use wherever we possibly can.

We are committed to supporting local businesses; many of the products sold in our gift shop and much of the food served in our cafes is locally sourced.

We are proud to be part of the social enterprise ethos of Alston Moor, the world's first Social Enterprise town.

KEY:

- Railway Station
- Railway Line
- Public Right of Way
- Permissive Footpath
- National Cyclepath
- Car Park P
- Picnic Area X

Lots to see and do!

At Alston you'll learn more about the history of the railway and the vintage locos which haul our trains when you visit the Discovery Centre and Engineering Workshop Gallery. There's also a gift shop stocked with something to suit every pocket and interest; from railway memorabilia, to souvenirs of your day, to locally produced gifts and toys for our younger visitors, and don't forget to collect your free spotter sheet for your journey!



The "Crossing Café" at Alston serves an exciting seasonal menu with an emphasis on locally sourced produce and gluten free, vegetarian and vegan options. A take-out menu is also available so you can stop off at one of our 4 picnic areas or enjoy refreshments as you journey through the countryside. And don't worry if it's not a train operating day, the café will still be open*, so come and walk along the South Tyne Trail and reward yourself with a tasty treat. The lineside Buffet Car at Slaggyford station is usually open for drinks and snacks* and it's worth alighting from the train and exploring this picturesque little station. **check website for daily opening times*



Did you know that ...

South Tynedale Railway

- ▶ is the highest narrow gauge railway in England?
- ▶ is in the North Pennines Area of Outstanding Natural Beauty and easily reached via scenic routes from Newcastle, Durham, Carlisle and Hexham?
- ▶ is largely run by a team of fabulous volunteers who would like to extend the line, improve the South Tyne Trail, support the local wildlife, celebrate our dark skies and improve our offer for visitors?



Would you like to join us and help us achieve our aims?

We have an enthusiastic group of volunteers who help across our site; from gardening to events to train crew, you'll find a willing volunteer or two behind it.

Why don't you join us? We operate a generous discount scheme and training is given for every role.

volunteering@south-tynedale-railway.org.uk (adults)

We welcome younger members too - get in touch with **strivingsignaller@yahoo.com** (aged 11-18) to find out more.