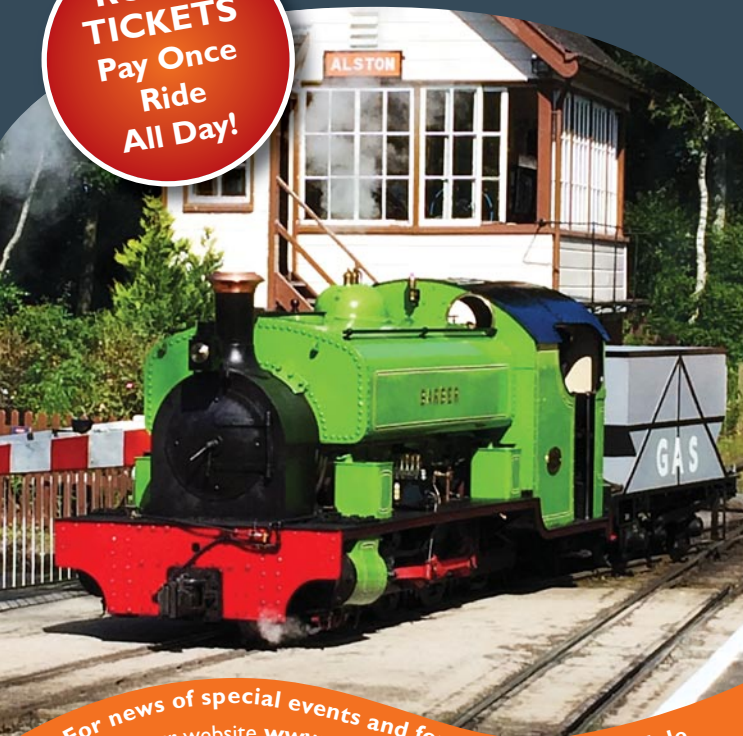


SOUTH TYNEDALE RAILWAY

the friendly railway

**ROVER
TICKETS**
Pay Once
Ride
All Day!



For news of special events and for our current schedule
visit our website www.south-tynedale-railway.org.uk
email enquiries@south-tynedale-railway.org.uk
or ring talking timetable 01434 382828

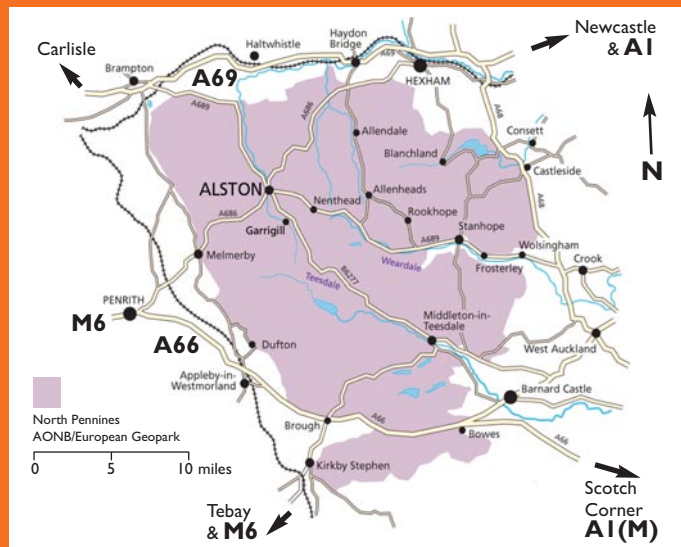
2018

INFORMATION & TIMETABLE

TRIP ADVISOR CERTIFICATE OF EXCELLENCE 2014, 15, 16 & 17

GOLD at the NORTH EAST TOURISM AWARDS 2017
for Small Visitor Attraction & Dog Friendly Attraction

How to find us ...



By Car: Alston Station is just to the north of the town centre on the A686. Sat Nav postcode: CA9 3JB.

Slaggyford Station is situated just off the A689 Alston - Brampton road. Free parking at the station. Sat Nav postcode: CA8 7NH.

By Bus: Public bus services vary seasonally and include Newcastle, Hexham, Carlisle, Haltwhistle, Keswick and Stanhope. Visit traveline (www.traveline.info) or Go North East (www.simplygo.com) for info.

By Train: The nearest National Rail stations are at Haltwhistle, Langwathby and Penrith.

Accessibility: All facilities at Alston & Slaggyford Stations are generally accessible. A carriage with access for wheelchair users is available. Bicycles will be carried only if space is available. Please speak to the guard for information.

www.south-tynedale-railway.org.uk

Visit our website for information on train services, special events, membership plus background to the railway and its locomotives. On-line payment is available for some events.

See us on  Facebook  Twitter  Trip Advisor

South Tynedale Railway, Alston, Cumbria, CA9 3JB
t: 01434 382828 e: enquiries@south-tynedale-railway.org.uk

Welcome to *the friendly railway*

Climb aboard at any of our stations for a leisurely ride through the scenic South Tyne Valley in the North Pennines Area of Outstanding Natural Beauty (AONB).

Explore our restored stations at Alston and Slaggyford, perhaps break your journey at Lintley or Kirkhaugh and walk for a while on the South Tyne Trail.

Look out to the rolling hills and down to the peaceful water's edge. Every square metre is teeming with life - from arctic flowers to native woodland. Roe deer and red squirrels are frequent visitors and in the spring and early summer the air is full of the distinctive call of the curlew and lapwing. As the seasons change, the vibrant colours of the wildflowers in the meadows and verges slowly give way to the purple hues of the heather and finally to a landscape of white tipped hills and winding valleys.

We welcome visitors of all ages and abilities and our trains, station buildings and Discovery Centre are fully accessible.



We love dogs - they're welcome everywhere at STR!

© Dave Hewitt



Lots to see and do!

Our trains, hauled by vintage steam, diesel and battery electric locomotives each have a fascinating history and you can learn more about them and the history of the railway by visiting our newly refurbished Discovery Centre and Engineering Workshop Gallery where our engineering staff and volunteers will be very happy to chat with you.

Visit the Crossing Café, which is open daily in the main season and serves an exciting seasonal menu with an emphasis on locally sourced produce and gluten free, vegetarian and vegan options. A take-out menu is also available so you can stop off at one of our 4 picnic areas or enjoy refreshments as you journey through the countryside. The Dining Car at Slaggyford station is open in the main season so why not treat yourself to refreshments before you travel back?

Our gift shop, stocked with railway memorabilia and a range of locally produced gifts is the perfect place to find a souvenir of your day with us. There's something to suit every age and pocket!

And don't forget to check our website for details of the special events, workshops and courses which we run throughout the year. Our Halloween and Christmas Specials are particularly popular so make sure you book your seat early!

2018 Train Times, Operating Days & Fares

| | | | |
|--------------------------|--------------|--------------|--------------|
| ALSTON DEPART | 10:45 | 13:15 | 15:15 |
| KIRKHAUGH | 11:00 | 13:30 | 15:30 |
| LINTLEY | 11:08 | 13:38 | 15:38 |
| SLAGGYFORD ARRIVE | 11:20 | 13:50 | 15:50 |

| | | | |
|--------------------------|--------------|--------------|--------------|
| SLAGGYFORD DEPART | 11:40 | 14:10 | 16:10 |
| LINTLEY | 11:50 | 14:20 | 16:20 |
| KIRKHAUGH | 11:58 | 14:28 | 16:28 |
| ALSTON ARRIVE | 12:15 | 14:45 | 16:45 |

Kirkhaugh & Lintley are 'request' stops; Please hold out your hands to request the approaching train to stop. When joining the train, passengers must indicate to the Guard if they intend to alight at a request stop. Please check our website for details of special events as the timetable may differ from that printed.

Rover: Ride all day except some special events.

| | | |
|---------------|--------------|-----|
| Adult Rover | all stations | £10 |
| Child Rover | all stations | £5 |
| Family Rover* | all stations | £25 |

*2 adults and a maximum of three children (age 1-15).
Children under 1 travel free

Single: One single journey only between a maximum of four consecutive stations including departure station.

| | |
|--------------|----|
| Adult Single | £8 |
| Child Single | £4 |

Dog 'Rover' £2 when accompanied by a fare paying human
Bicycles £1 where space allows in the guard van

All tickets are donation tickets to allow us to claim Gift Aid.
Please say if you would prefer an alternative ticket.

| March | | | | | | |
|-------|----|----|----|----|----|----|
| Su | Mo | Tu | We | Th | Fr | Sa |
| | | | | | 30 | 31 |

| April | | | | | | |
|-------|----|----|----|----|----|----|
| Su | Mo | Tu | We | Th | Fr | Sa |
| 1 | 2 | 3 | 4 | 5 | 6 | 7 |
| 8 | 9 | 10 | 11 | 12 | 13 | 14 |
| 15 | | 17 | | 19 | | 21 |
| 22 | | 24 | | 26 | | 28 |
| 29 | | | | | | |

| May | | | | | | |
|-----|----|----|----|----|----|----|
| Su | Mo | Tu | We | Th | Fr | Sa |
| | | 1 | | 3 | | 5 |
| 6 | 7 | 8 | | 10 | | 12 |
| 13 | | 15 | | 17 | | 19 |
| 20 | | 22 | | 24 | | 26 |
| 27 | 28 | 29 | 30 | 31 | | |

| June | | | | | | |
|------|----|----|----|----|----|----|
| Su | Mo | Tu | We | Th | Fr | Sa |
| | | | | 1 | 2 | |
| 3 | | 5 | | 7 | | 9 |
| 10 | | 12 | | 14 | | 16 |
| 17 | | 19 | | 21 | | 23 |
| 24 | | 26 | | 28 | | 30 |

| July | | | | | | |
|------|----|----|----|----|----|----|
| Su | Mo | Tu | We | Th | Fr | Sa |
| 1 | | 3 | | 5 | | 7 |
| 8 | | 10 | | 12 | | 14 |
| 15 | | 17 | | 19 | | 21 |
| 22 | 23 | 24 | 25 | 26 | 27 | 28 |
| 29 | 30 | 31 | | | | |

| August | | | | | | |
|--------|----|----|----|----|----|----|
| Su | Mo | Tu | We | Th | Fr | Sa |
| | | | 1 | 2 | 3 | 4 |
| 5 | 6 | 7 | 8 | 9 | 10 | 11 |
| 12 | 13 | 14 | 15 | 16 | 17 | 18 |
| 19 | 20 | 21 | 22 | 23 | 24 | 25 |
| 26 | 27 | 28 | 29 | 30 | 31 | |

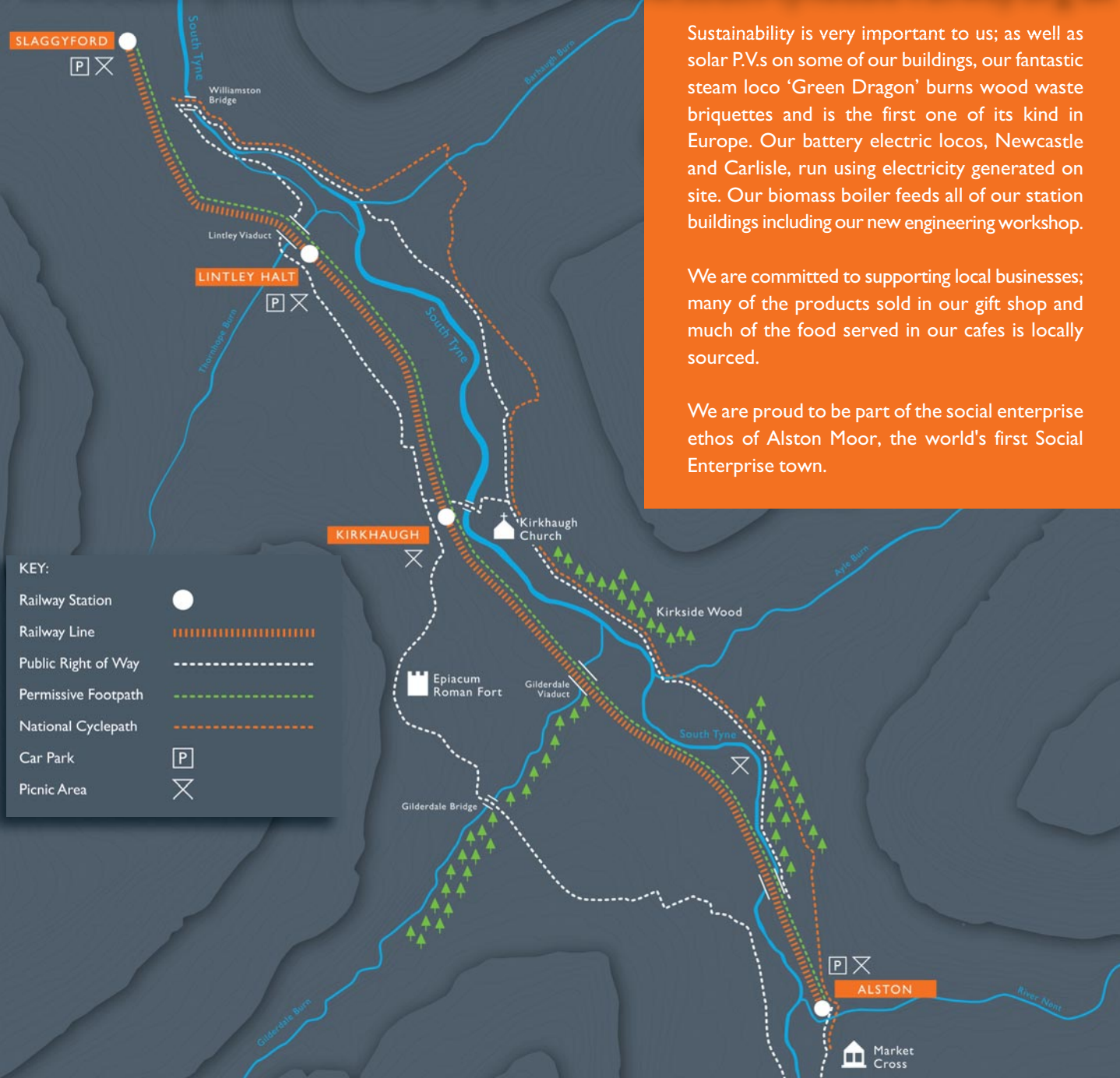
| September | | | | | | |
|-----------|----|----|----|----|----|----|
| Su | Mo | Tu | We | Th | Fr | Sa |
| | | | | | | 1 |
| 2 | | 4 | | 6 | | 8 |
| 9 | | 11 | | 13 | | 15 |
| 16 | | 18 | | 20 | | 22 |
| 23 | | 25 | | 27 | | 29 |
| 30 | | | | | | |

| October | | | | | | |
|---------|----|----|----|----|----|----|
| Su | Mo | Tu | We | Th | Fr | Sa |
| | 2 | | 4 | | | |
| 7 | 9 | | 11 | | | |
| 14 | 16 | | 18 | | | |
| 21 | 22 | 23 | 24 | 25 | 26 | 27 |
| 28 | 29 | 30 | 31 | | | |

| December | | | | | | |
|----------|----|----|----|----|----|----|
| Su | Mo | Tu | We | Th | Fr | Sa |
| | | | | | | 1 |
| 2 | | | | | | 8 |
| 9 | | | | | | 15 |
| 16 | | | | | | |

We have a range of events through the year - see our website for further details

Our Santa Specials will run on the December dates highlighted in red.



Sustainability is very important to us; as well as solar P.V.s on some of our buildings, our fantastic steam loco 'Green Dragon' burns wood waste briquettes and is the first one of its kind in Europe. Our battery electric locos, Newcastle and Carlisle, run using electricity generated on site. Our biomass boiler feeds all of our station buildings including our new engineering workshop.

We are committed to supporting local businesses; many of the products sold in our gift shop and much of the food served in our cafes is locally sourced.

We are proud to be part of the social enterprise ethos of Alston Moor, the world's first Social Enterprise town.

Financial support from:





Join us as a volunteer ...



Ever wanted to drive a steam or diesel locomotive, work in the signal box or as a guard for a real running railway? Do you have what it takes to join our events team and become a wizard or an elf for the day? Or are you still at school and want to get involved with our STRIVERS youth group?

The South Tynedale Railway Preservation Society are always on the look out for new members. You will get half fare travel for yourself and a guest throughout the year and 10% off café and shop purchases as well as receiving copies of the railway's very own magazines. You will also be able to vote at the AGM to help the railway's continuing success.

We welcome members getting involved in all aspects of the railway. For more information on volunteering, see our website, download the form, email us (enquiries@south-tynedale-railway.org.uk) or call us (01434 338212) to discuss and arrange a visit. We're a great team to be part of!

I/we wish to apply for membership of the South Tynedale Railway Preservation Society in accordance with the Society's Memorandum and Articles of Association.

BLOCK CAPITALS please

Title: Mr Mrs Miss Other

| | |
|------------------------|------|
| Surname | |
| First names(s) | |
| Signature (if over 18) | Date |
| Occupation | |
| Address | |
| Postcode | |
| email | |
| Telephone | |

Full Name and Date of birth of Junior Associates (under 18)

| Name | DOB |
|------|-----|
|------|-----|

| | | |
|---------------------------|---------------------------|---|
| Subscription Rates | Full rate £22 | £ |
| | Reduced rate* £16 | £ |
| | Junior Associate £16 | £ |
| | Optional donation of | £ |
| | Society badge/brooch @ £3 | £ |
| | Total enclosed £ | |

Cheques/postal orders should be made payable to South Tynedale Railway Preservation Society. ***Reduced rate** applies to all members aged 60 or over and any member (aged 18 or over) at the same address as a member paying full rate. I am interested in becoming actively involved in the Society's work.

Gift Aid Donations Yes No

If you are a UK tax payer, please sign below to make your subscription worth much more to the Society. Please treat as Gift Aid Donations all qualifying gifts of money made **today** **in the future**

I confirm that I have paid or will pay an amount of Income Tax and/or Capital Gains Tax for each year (6th April to 5th April) that is at least equal to the amount of tax that all the charities or Community Amateur Sports Clubs that I donate to will reclaim on my gifts for that tax year. I understand that other taxes such as VAT and Council Tax do not qualify. I understand that the charity will reclaim 25p of tax on every £1 that I give. Please advise us in writing if this changes.

Signature _____ Date _____

Please notify us if you wish to cancel, or of any change in circumstances.
Please post with remittance to: South Tynedale Railway, Station House, Alston Cumbria, CA9 3JB
 Electronic Banking is available for membership - for information contact: j.goodfellow@south-tynedale-railway.org.uk